

PART OF N. 1/2 OF SECTION 22, T.6 N., R.1 W., S.L.B. & M.
ROLLING HILLS ADDITION NO. 6

140

LOTS 6 - 17

IN OGDEN CITY

SCALE 1"=50'

TAXING UNIT 25

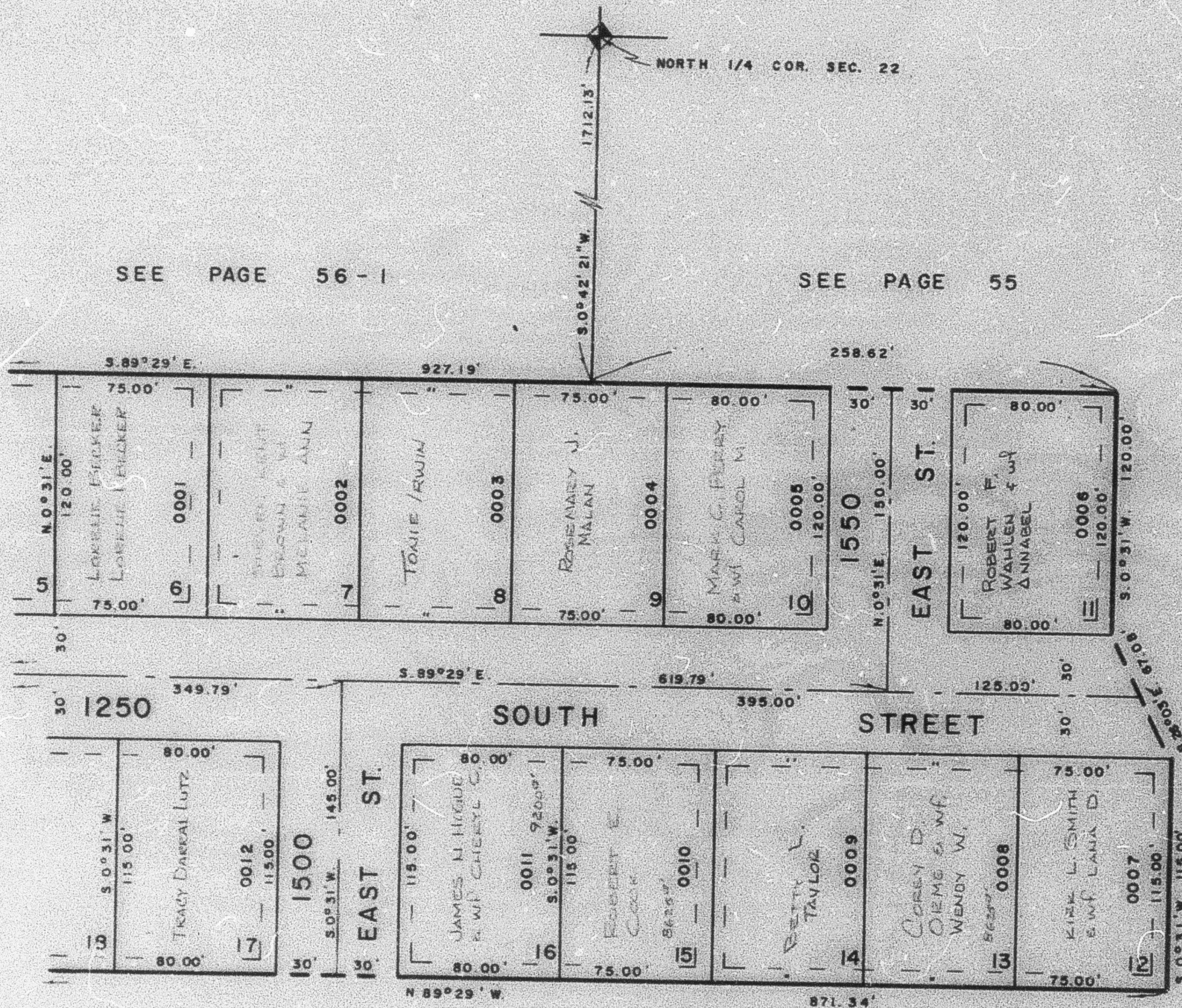
PREFIX 13-140

SEE PAGE 56-1

SEE PAGE 55

SEE PAGE 139

SEE PAGE 45



SEE PAGE 58-1

SEE PAGE 45

7' UTILITY & DRAINAGE ESMTS.
 EACH SIDE OF PROPERTY LINE
 AS INDICATED BY DASHED LINES

FOR COMPLETE ENG. DATA
 SEE ORIG. DED. PLAT IN
 BOOK 17, PAGE 57